

# Let's make sailing safer

At Mac N Hom Marine Equipments (P) Ltd., we are focused on range of products that meet the ever increasing demands of Marine based customers in terms of sophistication and diversification. We have brought to market innovative products, one after another to provide only the highest quality goods and services for your requirements and offer customised solutions and challenging applications quickly and cost effectively.

**MAC-N-HOM**  
**MARINE EQUIPMENTS (P) LTD.**  
 Let's make sailing safer



## HYDRAULIC STEERING SYSTEMS

**Model : JumboZ-300**



**Model Type : Semi-Balanced Actuator**  
 Ram Dia : 30 mm x2  
 Stroke : 260 mm  
 Torque : 405 Kg.m for a Tiller Arm having Radius 180 mm

**Medium Barges**  
**High Speed Passenger Boats**  
**Purse-Seins & Trawler Fishing Vessels**

**Gajalakshmi Industries Pvt. Ltd., Mumbai**



**Catamaran Cruise Boat**



**Fishing Vessels- Manglore**



**Poorna Prakash-300**



- ✦ Torque rating up to 300kg.m
- ✦ Tiller Arm turn up to 45 degrees on both sides
- ✦ Used in Catamaran & Single Rudder vessels
- ✦ Used in Purse-seine & fishing Trawler vessels
- ✦ Heavy Duty Ram Size: 30mm x 2 nos

**Package Included**

**Manual-Hydraulic Package Includes:**

- ★ Steering Wheel - Wooden/SS
- ★ Helm Pump, Steering Column & Self priming unit
- ★ Marine Painted Ferruled Seamless steel Tubes & Hoses
- ★ Hydraulic Actuator-**JumboZ-300**

**Electro-Hydraulic Package Includes:**

- ★ Joystick Control Panel with Audio Visual Alarms
- ★ Hydraulic Power pack & Sensors
- ★ Emergency Manual-Hydraulic Steering
- ★ Marine Painted Ferruled seamless steel Tubes & Hoses
- ★ Hydraulic Actuator-**JumboZ-300**

- 1 Joystick Operated Control Panel with audio visual alarms
- 2 Electro Hydraulic Power Pack with Sensors for Electro Hydraulic Package
- 3 Marine Paint Coated, Ferruled Nut ends Seamless Steel Tubes for Smooth Oil Flow
- 4 Emergency Manual Hydraulic version with Helm Pump, Steering Wheel & Self Priming Unit



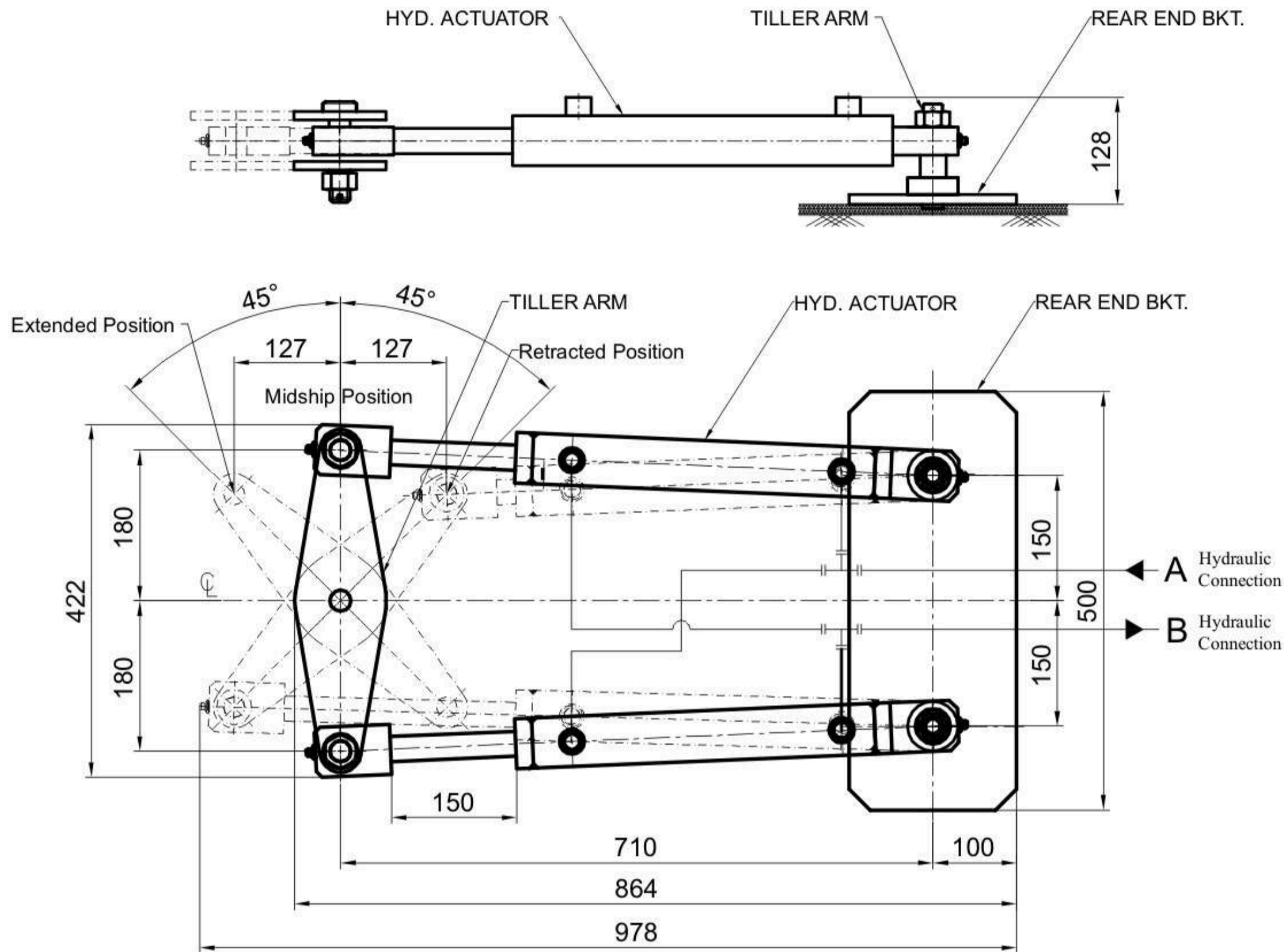
**MAC-N-HOM MARINE EQUIPMENTS (P) LTD.**  
 57/187-C, 'VRINDAVAN', Chilavanur Road, Kadavanthra, Kochi-682 020, Kerala, India  
 Mob.: + 91 9072900576, +91 484 2312396, 2319998,  
 E-mail: info@macnhomsystems.com web site: www.macnhomsystems.com  
 CIN: U29308KL2018PTC055182



## SPECIFICATIONS

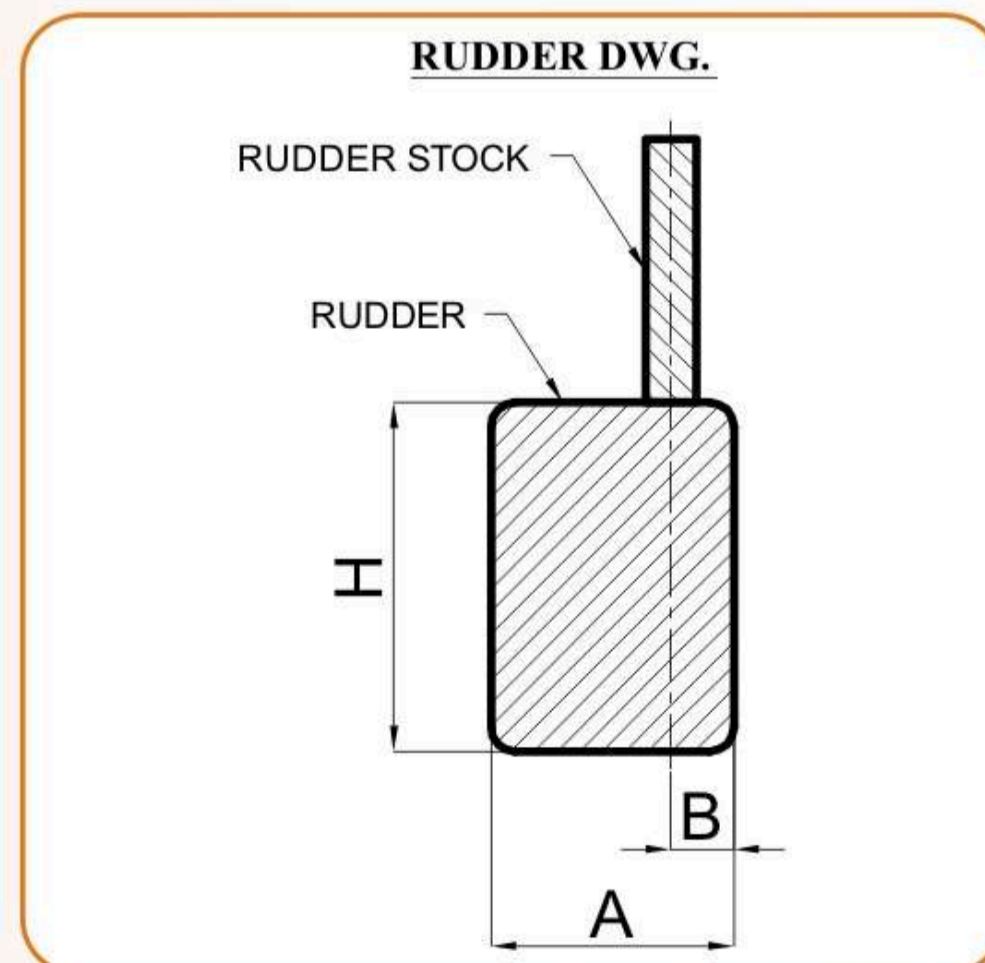
- Actuator Ram Diameter : 30 mm. x 2
- Actuator Stroke : 260 mm.
- Force @ 70 Kg / cm<sup>2</sup> Hydraulic Pressure : 2252 Kgf.
- Torque with 180 mm. Tiller Arm upto ±45° turn from Midship.  
(Actuator Pin to Rudder Shaft Centre distance : 180 mm.) : 405 Kgm.

### MOUNTING ARRANGEMENT OF HYD. ACTUTOR JumboZ - 300



### DATA FOR STEERING SELECTION

VESSEL DETAILS		
Length of the Vessel		Meters
Breadth of Vessel		Meters
Draft of the Vessel		Meters
Hull form ( Mono / Catamaran )		
No of Engines		Nos
Power of each Engine		HP
Speed of Vessel		Knots
RUDDER DETAILS ( See Rudder Dwg. )		
Breadth of Rudder A		Meters
Breadth of Semi-balanced Area B		Meters
Height of Rudder H		Meters
Number of Rudders		Nos
Vessel Regn. Class - No Class / IRS / RINA / DNV / BV		



- NOTES : 1. Please fill in this data sheet with your Vessel data, and email to [info@macnhomsystems.com](mailto:info@macnhomsystems.com) OR Whatsapp to +91 90729 00576.  
 2. All dimensions are in mm.  
 3. Dimensions are reference purpose only; kindly confirm with our Technical Department.